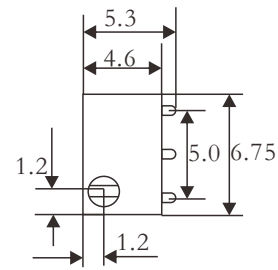
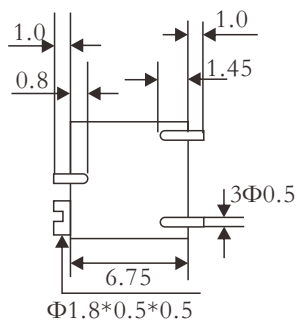


● Feature

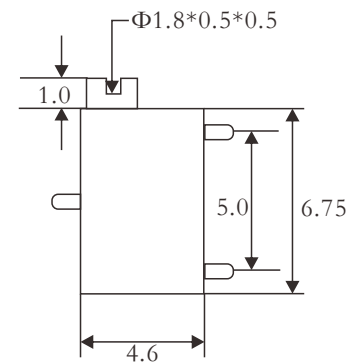
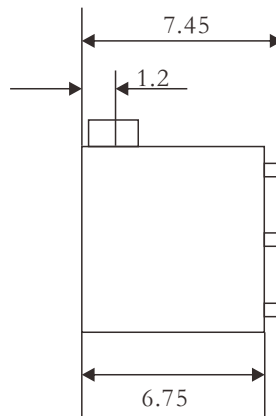
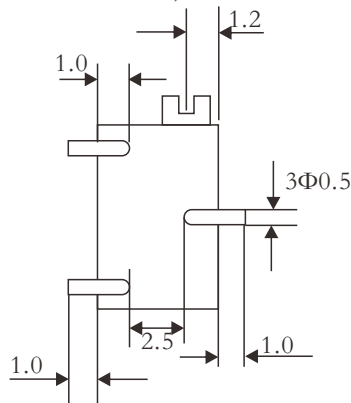
- (Standard Resistance Range): 10Ω-2MΩ
- (Resistance Tolerance): ± 5% , ± 10%
- (Terminal Resistance): ≤ 1%R or 2Ω
- (Contact Resistance Variation): ≤ 3%R or 3Ω
- (Insulation Resistance): R1 ≥ 1GΩ
- (Withstand Voltage): 101.3kPa 600V 8.5kPa 250V
- (Effective Electrical Travel): 12 ± 2(cycles)

● Dimensions

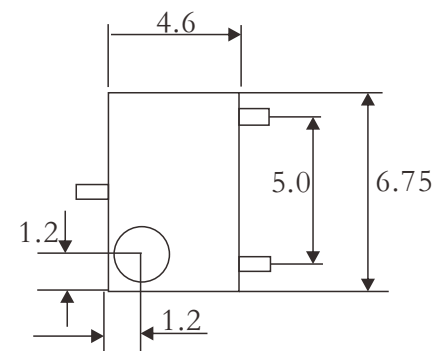
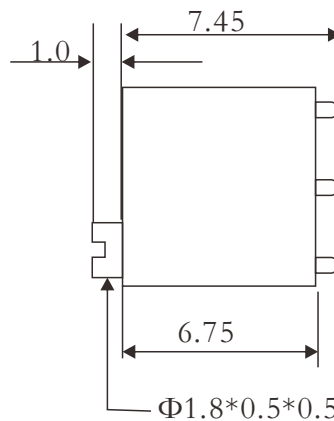
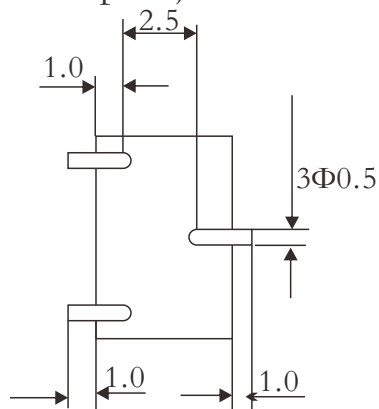
3269P Side adjust



3269X Side adjust



3269W Top adjust



● Reference Standards

JIS C 5201-1

● Ordering Information

Example:

3269	0.25	B	C	10R0
(1)	(2)	(3)	(4)	(5)
Series Name	Power Rating	Resistance Tolerance	TCR	Resistance

(1)Type: 3269W,3269X,3269P, SERIES

(2)Power Rating: 0.25=0.25W

(3)Tolerance: J=±5%,K=±10%

(4)TCR:±100ppm/°C;±250ppm/°C;

(5)Resistance Value:10R0=10R、10K00=10KΩ

● Power And Resistance etc

Type	Power(W)	Resistance Range(Ω)	Tolerance Range	TCR PPM/°C	MaxWorking Voltage(V)	Operating Temperature
3269	0.25W	10Ω~2MΩ	±5%~±10%	±100ppm/°C ±250ppm/°C	200V	-55°C ~+125°C

● Performance

(Rated Power):	+70°C 0.5W;+125°C 0W
(Temperature Range) :	-55°C +125°C
(Temperature Coefficient):	±250、±100ppm/°C
(Temperature Variation) :	$\Delta R \leq \pm 2\%R$, $\Delta(U_{ab}/U_{ac}) \leq \pm 1\%$
(Collision):	390m/s ² 、4000 das Mal $\Delta R \leq \pm 1\%R$
(Vibration):	10~500HZ, 0.75mm or 98m/s ² ,6h $\Delta R \leq \pm 1\%R$, $\Delta(U_{ab}/U_{ac}) \leq \pm 2\%$
(Climate Category):	$\Delta R \leq \pm 3\%R$, $R1 \geq 100M\Omega$
(Electrical Endurance at 70°C):	0.25W、1000h、 $\Delta R \leq \pm 3\%R$
(Mechanical Endurance)	200(cyclesk) $\Delta R \leq \pm 3\%R$
(Steady Damp-heat):	$\Delta R \leq \pm 3\%R$ 、 $R1 \geq 100M\Omega$
(Total Mechanical Travel)	12±2(cycles)
(Starting Torque)	≤25mN.m
(Clutch Torque)	≤25mN.m